

**Utility Exhaust Belt-Drive Blower**

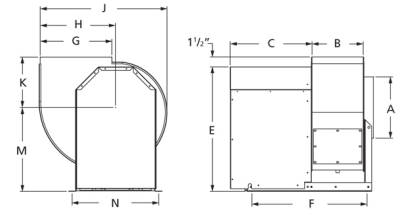


Designed for commercial kitchen exhaust or industrial spark resistant applications requiring high volumes of air at high static pressures. Suitable for ducted exhaust, supply or return-air applications. Constructed out of heavy gauge steel with polyester gray coating. The scroll is welded, has a bolted access door and 1 inch threaded drain connection for easy cleaning.

- Maximum inlet air temperature: 300° F
- UL/cUL 762 Listed for Restaurant Exhaust Appliances
- Polyester gray coating
- Backward incline nonoverloading aluminum wheel
- Aluminum rub ring
- Bolted access door

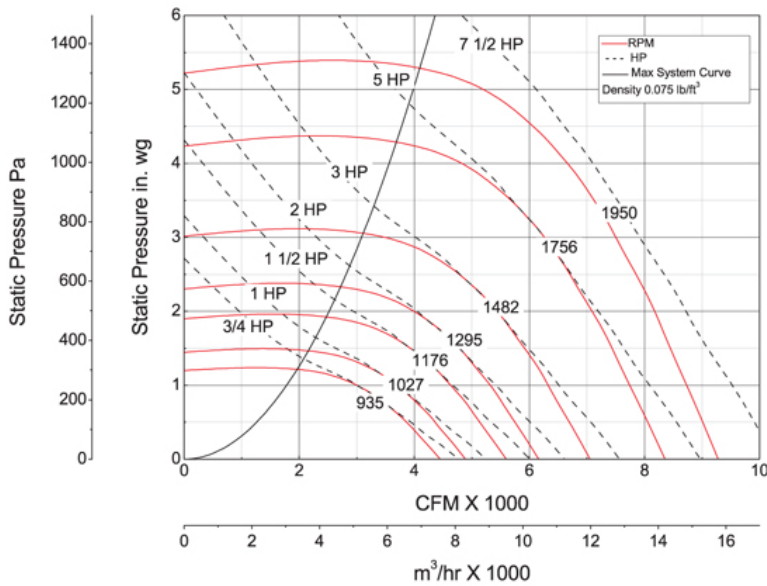


Dayton Electric Mfg. Co. certifies that the blowers shown herein are licensed to bear the AMCA seal. The ratings shown are based on tests and procedures performed in accordance with AMCA Publication 211 and comply with the requirements of the AMCA Certified Ratings Program.



<b>A</b>	<b>B</b>	<b>C</b>	<b>E</b>	<b>F</b>	<b>G</b>
21 1/8 in	15 3/8 in	23 3/4 in	36 1/8 in	35 in	21 5/8 in
<b>H</b>	<b>J</b>	<b>K</b>	<b>M</b>	<b>N</b>	
21 1/2 in	37 5/8 in	14 7/8 in	24 1/2 in	25 5/8 in	

**Performance Characteristics**



**Construction Features**

<b>Impeller Diameter (Typ.)</b>	20 in
<b>Impeller Type</b>	Backward Inclined Centrifugal
<b>Impeller Material</b>	Aluminum
<b>Max Inlet Temp</b>	300 °F
<b>Bearing Type</b>	Ball
<b>Drive Package Description</b>	Drives By Others
<b>Warranty Length</b>	1 Year

**Air & Sound Performance**

Motor HP	Max BHP	Fan RPM	CFM @	0.000" SP	0.125" SP	0.250" SP	0.375" SP	0.500" SP	0.625" SP	0.750" SP	0.875" SP	1.000" SP	1.250" SP	1.500" SP	1.750" SP	2.000" SP	2.250" SP	2.500" SP	2.750" SP	3.000" SP
3/4	0.75	935	CFM	4451	4309	4164	4016	3863	3689	3506	3286	3005	—	—	—	—	—	—	—	—
			Sones	14.6	14.1	13.6	13.2	12.7	12.3	12.0	11.8	11.6	—	—	—	—	—	—	—	—
1	1.00	1027	CFM	4889	4760	4629	4494	4362	4215	4057	3893	3703	3189	—	—	—	—	—	—	—
			Sones	16.1	15.6	15.2	14.8	14.4	13.9	13.6	13.3	13.0	12.5	—	—	—	—	—	—	—
1 1/2	1.50	1176	CFM	5598	5485	5372	5256	5138	5023	4904	4765	4627	4325	3936	3311	—	—	—	—	—
			Sones	18.9	18.5	18.1	17.7	17.4	17.0	16.7	16.3	15.9	15.3	14.9	14.6	—	—	—	—	—
2	2.00	1295	CFM	6164	6062	5960	5856	5749	5642	5537	5435	5309	5057	4782	4445	3996	3091	—	—	—
			Sones	21.0	21.0	21.0	20.0	20.0	19.6	19.3	19.0	18.7	18.0	17.5	17.0	16.6	17.3	—	—	—
3	3.00	1482	CFM	7054	6965	6876	6786	6695	6602	6508	6415	6324	6128	5908	5684	5435	5144	4782	4284	3335
			Sones	27.0	26.0	26.0	25.0	25.0	25.0	24.0	24.0	23.0	23.0	22.0	22.0	22.0	21.0	21.0	21.0	22.0
5	5.00	1756	CFM	8359	8283	8208	8132	8057	7981	7903	7824	7745	7587	7436	7265	7079	6894	6702	6491	6257
			Sones	34.0	34.0	33.0	33.0	33.0	32.0	32.0	31.0	31.0	30.0	30.0	29.0	29.0	28.0	28.0	28.0	28.0
7 1/2	6.78	1950	CFM	9282	9214	9146	9078	9010	8942	8874	8804	8733	8591	8449	8312	8173	8006	7839	7672	7500
			Sones	41.0	41.0	40.0	40.0	39.0	39.0	39.0	38.0	38.0	37.0	36.0	36.0	35.0	35.0	34.0	34.0	33.0

Performance certified is for installation type B: Free inlet, Ducted outlet. Power rating (BHP) does not include transmission losses. Performance ratings do not include the effects of appurtenances (accessories). The AMCA Certified ratings Seal applies to air performance ratings only.