

**Utility Exhaust Belt-Drive Blower**



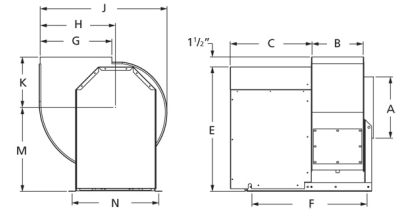
Designed for commercial kitchen exhaust or industrial spark resistant applications requiring high volumes of air at high static pressures. Suitable for ducted exhaust, supply or return-air applications. Constructed out of heavy gauge steel with polyester gray coating. The scroll is welded, has a bolted access door and 1 inch threaded drain connection for easy cleaning.

- Maximum inlet air temperature: 300° F
- UL/cUL 762 Listed for Restaurant Exhaust Appliances
- Polyester gray coating
- Backward incline nonoverloading aluminum wheel
- Aluminum rub ring
- Bolted access door



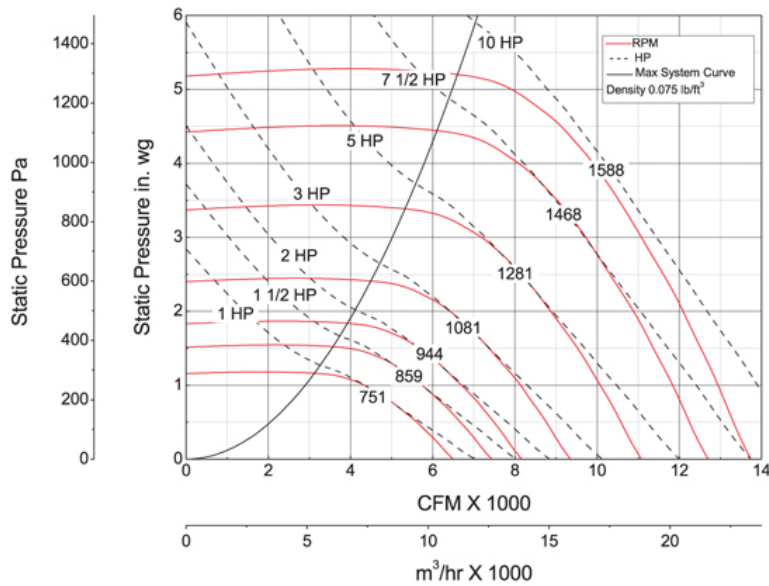
Dayton Electric Mfg. Co. certifies that the blowers shown herein are licensed to bear the AMCA seal. The ratings shown are based on tests and procedures performed in accordance with AMCA Publication 211 and comply with the requirements of the AMCA Certified Ratings Program.

UL/cUL 762



A	B	C	E	F	G
25 7/8 in	19 in	25 in	45 3/4 in	36 in	26 in
H	J	K	M	N	
26 1/4 in	45 7/8 in	17 3/4 in	31 1/2 in	31 1/8 in	

**Performance Characteristics**



**Construction Features**

<b>Impeller Diameter (Typ.)</b>	24 1/2 in
<b>Impeller Type</b>	Backward Inclined Centrifugal
<b>Impeller Material</b>	Aluminum
<b>Max Inlet Temp</b>	300 °F
<b>Bearing Type</b>	Ball
<b>Drive Package Description</b>	Drives By Others
<b>Warranty Length</b>	1 Year

**Air & Sound Performance**

Motor HP	Max BHP	Fan RPM	CFM @	0.000" SP	0.125" SP	0.250" SP	0.375" SP	0.500" SP	0.625" SP	0.750" SP	0.875" SP	1.000" SP	1.250" SP	1.500" SP	1.750" SP	2.000" SP	2.250" SP	2.500" SP	2.750" SP	3.000" SP	
1	1.00	751	CFM	6496	6277	6075	5848	5610	5342	5051	4736	4330	—	—	—	—	—	—	—	—	—
			Sones	12.9	12.7	12.5	12.4	12.2	11.9	11.6	11.3	10.9	—	—	—	—	—	—	—	—	—
1 1/2	1.50	859	CFM	7460	7234	7059	6873	6674	6471	6238	5996	5738	5138	3820	—	—	—	—	—	—	—
			Sones	15.5	15.3	15.1	14.9	14.7	14.5	14.2	13.9	13.6	12.9	14.8	—	—	—	—	—	—	—
2	2.00	944	CFM	8166	7982	7824	7665	7485	7304	7120	6907	6692	6225	5672	4788	—	—	—	—	—	—
			Sones	17.9	17.7	17.5	17.3	17.1	16.9	16.7	16.4	16.1	15.4	14.7	14.5	—	—	—	—	—	—
3	3.00	1081	CFM	9351	9189	9045	8907	8768	8610	8452	8294	8128	7757	7361	6942	6420	5655	—	—	—	—
			Sones	23.0	22.0	22.0	22.0	22.0	21.0	21.0	21.0	21.0	20.0	19.3	18.5	17.8	—	—	—	—	—
5	5.00	1281	CFM	11,081	10,944	10,813	10,697	10,580	10,463	10,339	10,206	10,072	9806	9512	9199	8870	8520	8155	7719	7188	—
			Sones	31.0	31.0	30.0	30.0	30.0	30.0	30.0	30.0	29.0	29.0	28.0	27.0	27.0	26.0	25.0	24.0	23.0	24.0
7 1/2	7.50	1468	CFM	12,698	12,579	12,461	12,354	12,252	12,150	12,048	11,946	11,834	11,602	11,369	11,138	10,868	10,595	10,312	10,016	9708	—
			Sones	36.0	36.0	36.0	35.0	35.0	35.0	35.0	35.0	34.0	34.0	33.0	33.0	33.0	32.0	31.0	30.0	30.0	29.0
10	9.42	1588	CFM	13,736	13,626	13,516	13,412	13,318	13,223	13,129	13,035	12,941	12,733	12,518	12,303	12,089	11,848	11,595	11,342	11,074	—
			Sones	42.0	41.0	41.0	41.0	40.0	40.0	40.0	40.0	39.0	39.0	39.0	38.0	37.0	37.0	36.0	35.0	35.0	34.0

Performance certified is for installation type B: Free inlet, Ducted outlet. Power rating (BHP) does not include transmission losses. Performance ratings do not include the effects of appurtenances (accessories). The AMCA Certified ratings Seal applies to air performance ratings only.