

Utility Exhaust Direct-Drive Blower



Designed for industrial spark resistant applications requiring high volumes of air at high static pressures. Constructed out of heavy gauge steel with polyester gray coating. Scroll is clockwise rotation and can be rotated in 45° increments to 8 positions (shipped in upblast position). Includes weatherhood and a bolted access door located on the scroll. Features electronically commutated (EC) motor, providing up to 60% energy savings. Potentiometer dial on motor allows speed control down to 80%. Optional speed control kit No. 43Y140 allows the user to manually adjust a fan's speed from a remote location and mounts to a wall using a 2x4 junction box. For internal or external mounting.

- Maximum inlet air temperature: 180° F
- UL/cUL 705 Listed for Power Ventilators
- Polyester gray coating
- Backward incline nonoverloading aluminum wheel
- Aluminum rub ring
- Bolted access door



GREEN Product

- Variable Speed capable of 80% turn down at a minimum of 85% efficiency at all speeds
- Reduce Energy Consumption

AMCA Air

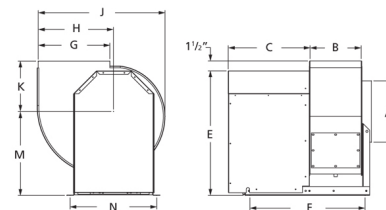


Dayton Electric Mfg. Co. certifies that the blowers shown herein are licensed to bear the AMCA seal. The ratings shown are based on tests and procedures performed in accordance with AMCA Publication 211 and comply with the requirements of the AMCA Certified Ratings Program.

UL/cUL 705



CSA Certified Motor



A	B	C	E	F	G
11 in	9 3/4 in	12 1/8 in	22 1/4 in	21 3/4 in	11 1/4 in
H	J	K	M	N	
11 1/2 in	20 1/8 in	8 5/8 in	15 1/8 in	16 in	

Performance Characteristics

No Fan Curve Available.

Construction Features

Impeller Diameter (Typ.)	11 1/8 in
Impeller Type	Backward Inclined Centrifugal
Impeller Material	Aluminum
Max Inlet Temp	180 °F
Warranty Length	1 Year

Motor Information

Motor Item Number	32RU47
Voltage	115
Hertz (Cycle)	60 Hz
Motor Phase	1
Motor Enclosure	Open
RPM	rpm
Full Load Amps	6.7

Air & Sound Performance

Motor HP	Max BHP	Fan RPM	CFM @	0.250" SP	0.500" SP	0.750" SP	1.000" SP	1.500" SP	2.000" SP	2.500" SP
1/2	—	1250	CFM	361	283	—	—	—	—	—
			Sones	—	—	—	—	—	—	—
1/2	—	1875	CFM	588	551	509	449	328	—	—
			Sones	—	—	13.2	—	—	—	—
1/2	—	2500	CFM	802	778	750	721	648	566	477
			Sones	—	—	22.0	—	—	—	—

Performance certified is for installation type B: Free inlet, Ducted outlet. Power rating (BHP) does not include transmission losses. Performance ratings do not include the effects of appurtenances (accessories). The AMCA Certified ratings Seal applies to air performance ratings only.