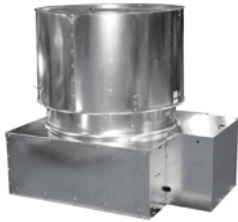


Emergency Smoke Exhaust Ventilator



Designed for industrial and commercial buildings such as warehouses, manufacturing facilities, foundries, and laboratories. Constructed of heavy gauge steel and is UL listed for "Emergency Smoke Control". A removable motor cover enables quick and easy access to the motor, belt and drives from the roof deck.

- Maximum inlet air temperature: 120° F
- 500° F Operation for 4 hours
- 100° F Operation for 15 mins.
- High temperature regreasable pillow block bearings
- UL/cUL Listed for Emergency Smoke Control
- Spring loaded damper lifters meet UL-793 Snow Load Rating

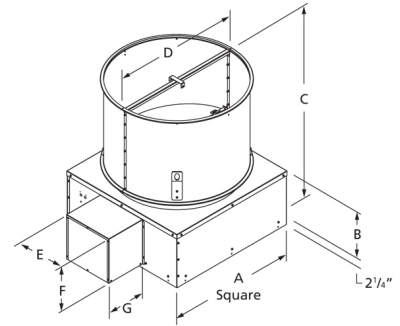


Dayton Electric Mfg. Co. certifies that the ventilators shown herein are licensed to bear the AMCA seal. The ratings shown are based on tests and procedures performed in accordance with AMCA Publication 211 and AMCA Publication 311 and comply with the requirements of the AMCA Certified Ratings Program.

UL/cUL 793

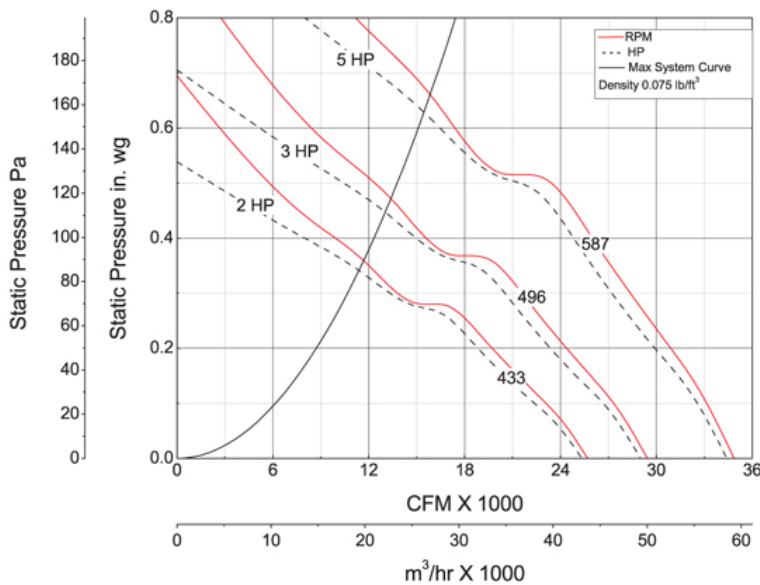


E53236
MH45468



| A | B | C | D | E | F |
|-----------|-----------|-------------------|-------|-----------|-----------|
| 57 1/2 in | 21 3/4 in | 71 833/1000 in | 56 in | 29 5/8 in | 24 3/8 in |
| G | | | | | |
| 16 1/2 in | | | | | |

Performance Characteristics



Construction Features

| | |
|----------------------------------|--------------------------------------|
| Impeller Diameter (Typ.) | 48 in |
| Impeller Type | Propeller |
| Impeller Material | Galvanized Steel |
| Number of Blades | 6 |
| Max Inlet Temp | 120 °F |
| Bearing Type | High Temp. Regreaseable Pillow Block |
| Drive Package Description | Drives By Others |
| Warranty Length | 1 Year |

Air & Sound Performance

| Motor HP | Max BHP | Fan RPM | CFM @ | 0.000" SP | 0.125" SP | 0.250" SP | 0.375" SP | 0.500" SP |
|----------|---------|---------|-------|-----------|-----------|-----------|-----------|-----------|
| 2 | 2.20 | 433 | CFM | 25,642 | 22,583 | 18,650 | — | — |
| | | | Sones | 18.8 | 18.4 | 18.2 | — | — |
| 3 | 3.31 | 496 | CFM | 29,373 | 26,836 | 23,563 | 19,730 | — |
| | | | Sones | 23.0 | 23.0 | 22.0 | 23.0 | — |
| 5 | 5.49 | 587 | CFM | 34,761 | 32,809 | 30,166 | 27,319 | 24,091 |
| | | | Sones | 29.0 | 29.0 | 29.0 | 28.0 | 29.0 |

Performance certified is for installation type A: Free inlet, Free outlet. Power rating (BHP) does not include transmission losses. Performance ratings do not include the effects of appurtenances (accessories). The sound ratings shown are loudness values in fan sones at 5 ft. (1.5 m) in a hemispherical free field calculated per AMCA Standard 301. Values shown are for installation type A: Free inlet hemispherical fan sone levels. The AMCA Certified Ratings Seal applies to sone ratings only.