

Utility Exhaust Belt-Drive Blower



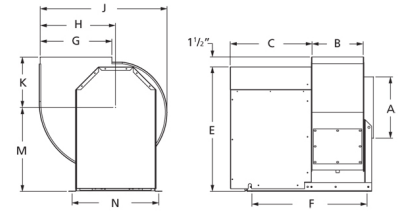
Designed for commercial kitchen exhaust or industrial spark resistant applications requiring high volumes of air at high static pressures. Suitable for ducted exhaust, supply or return-air applications. Constructed out of heavy gauge steel with polyester gray coating. The scroll is welded, has a bolted access door and 1 inch threaded drain connection for easy cleaning.

- Maximum inlet air temperature: 300° F
- UL/cUL 762 Listed for Restaurant Exhaust Appliances
- Polyester gray coating
- Backward incline nonoverloading aluminum wheel
- Aluminum rub ring
- Bolted access door



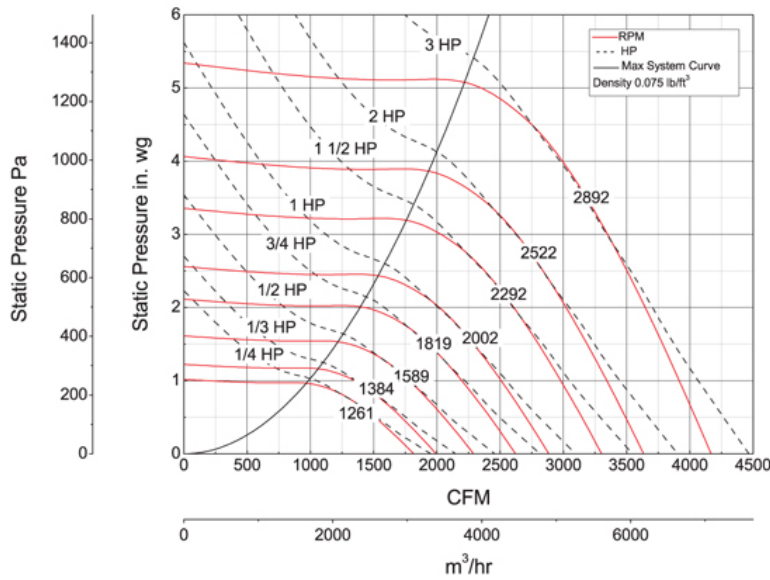
Dayton Electric Mfg. Co. certifies that the blowers shown herein are licensed to bear the AMCA seal. The ratings shown are based on tests and procedures performed in accordance with AMCA Publication 211 and comply with the requirements of the AMCA Certified Ratings Program.

UL/cUL 762



A	B	C	E	F	G
14 in	10 5/8 in	16 3/4 in	24 3/4 in	22 1/2 in	14 1/4 in
H	J	K	M	N	
14 5/8 in	25 1/2 in	10 5/8 in	16 5/8 in	17 5/8 in	

Performance Characteristics



Construction Features

Impeller Diameter (Typ.)	13 1/2 in
Impeller Type	Backward Inclined Centrifugal
Impeller Material	Aluminum
Max Inlet Temp	300 °F
Bearing Type	Ball
Drive Package Description	Drives By Others
Warranty Length	1 Year

Air & Sound Performance

Motor HP	Max BHP	Fan RPM	CFM @	0.000" SP	0.125" SP	0.250" SP	0.375" SP	0.500" SP	0.625" SP	0.750" SP	0.875" SP	1.000" SP	1.250" SP	1.500" SP	1.750" SP	2.000" SP	2.250" SP	2.500" SP	2.750" SP	3.000" SP
1/4	0.25	1261	CFM	1817	1745	1671	1593	1509	1419	1309	1169	—	—	—	—	—	—	—	—	—
			Sones	10.7	10.3	9.9	9.6	9.4	9.1	8.8	8.5	—	—	—	—	—	—	—	—	—
1/3	0.33	1384	CFM	1994	1929	1862	1793	1720	1642	1559	1462	1351	—	—	—	—	—	—	—	—
			Sones	12.1	11.8	11.3	11.0	10.7	10.4	10.2	9.9	9.6	—	—	—	—	—	—	—	—
1/2	0.50	1589	CFM	2290	2233	2176	2116	2056	1992	1926	1856	1783	1604	1296	—	—	—	—	—	—
			Sones	14.4	14.1	13.8	13.5	13.2	12.9	12.7	12.4	12.2	11.7	11.1	—	—	—	—	—	—
3/4	0.75	1819	CFM	2621	2571	2522	2471	2419	2366	2311	2256	2196	2074	1929	1755	1395	—	—	—	—
			Sones	17.7	17.4	17.2	16.9	16.6	16.3	16.0	15.8	15.6	15.3	14.9	14.3	13.7	—	—	—	—
1	1.00	2002	CFM	2885	2840	2795	2750	2703	2655	2607	2557	2507	2400	2290	2165	2011	1813	—	—	—
			Sones	19.9	19.6	19.4	19.2	18.9	18.7	18.4	18.2	18.0	17.7	17.3	16.9	16.4	15.9	—	—	—
1 1/2	1.50	2292	CFM	3303	3263	3224	3185	3145	3104	3062	3021	2979	2891	2801	2705	2607	2498	2367	2233	2015
			Sones	23.0	23.0	23.0	23.0	22.0	22.0	22.0	22.0	22.0	22.0	22.0	21.0	21.0	20.0	19.9	19.4	19.0
2	2.00	2522	CFM	3634	3598	3562	3527	3491	3455	3418	3380	3342	3266	3186	3105	3018	2930	2837	2739	2618
			Sones	26.0	26.0	26.0	26.0	26.0	26.0	25.0	25.0	25.0	25.0	24.0	24.0	24.0	24.0	23.0	23.0	22.0
3	3.00	2892	CFM	4167	4136	4105	4074	4042	4011	3980	3948	3915	3849	3783	3715	3645	3576	3500	3424	3347
			Sones	33.0	33.0	33.0	33.0	32.0	32.0	32.0	32.0	32.0	31.0	31.0	31.0	30.0	30.0	29.0	29.0	29.0

Performance certified is for installation type B: Free inlet, Ducted outlet. Power rating (BHP) does not include transmission losses. Performance ratings do not include the effects of appurtenances (accessories). The AMCA Certified ratings Seal applies to air performance ratings only.