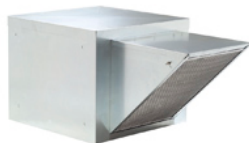
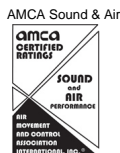


Centrifugal Belt-Drive Filtered Supply Ventilator

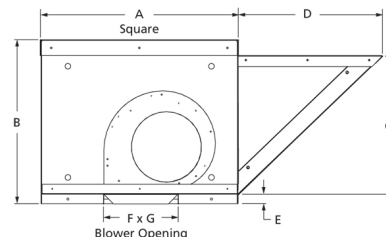


Designed to supply untempered filtered make-up air to commercial and institutional buildings or in commercial kitchen applications. Units are constructed of heavy gauge galvanized steel. Neoprene isolators minimize vibration and noise.

- Lifting lugs on drive frame
- Maximum inlet air temperature: 120° F
- NEMA 1 junction box located in motor enclosure
- Optional NEMA 1 and 4 disconnects available
- Sealed pillow block bearings
- UL/cUL 705 Listed for Power Ventilators
- Air handling quality bearings meet minimum of L10-100,000 hours

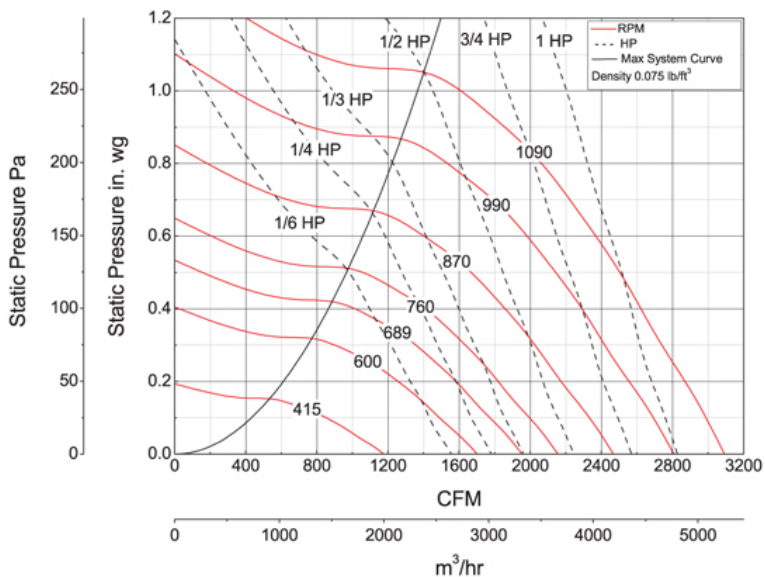


Dayton Electric Mfg. Co. certifies that the ventilators shown herein are licensed to bear the AMCA seal. The ratings shown are based on tests and procedures performed in accordance with AMCA Publication 211 and AMCA Publication 311 and comply with the requirements of the AMCA Certified Ratings Program.



A	B	C	D	E	F
30 in	25 in	21 1/4 in	22 in	1 1/2 in	11 3/8 in
G					
13 3/8 in					

Performance Characteristics



Construction Features

Impeller Diameter (Typ.)	11 1/8 in
Impeller Type	Forward Curved Centrifugal
Impeller Material	Steel
Max Inlet Temp	120 °F
Bearing Type	Sealed Pillow Block
Drive Package Description	Drives By Others
Warranty Length	1 Year

Air & Sound Performance

Motor HP	Max BHP	Fan RPM	CFM @	0.000" SP	0.125" SP	0.250" SP	0.375" SP	0.500" SP	0.625" SP	0.750" SP	0.875" SP	1.000" SP
1/6	0.04	415	CFM	1177	735	—	—	—	—	—	—	—
			Sones	9.9	12.3	—	—	—	—	—	—	—
1/6	0.18	600	CFM	1702	1435	1106	—	—	—	—	—	—
			Sones	12.8	11.5	11.3	—	—	—	—	—	—
1/4	0.28	689	CFM	1954	1722	1472	1115	—	—	—	—	—
			Sones	14.6	13.1	11.4	11.6	—	—	—	—	—
1/3	0.39	760	CFM	2156	1949	1730	1471	1048	—	—	—	—
			Sones	16.3	14.5	12.8	11.5	10.8	—	—	—	—
1/2	0.61	870	CFM	2468	2293	2100	1899	1667	1309	—	—	—
			Sones	19.2	17.3	15.9	13.7	12.3	11.6	—	—	—
3/4	0.92	990	CFM	2808	2661	2485	2324	2140	1935	1661	—	—
			Sones	23.0	21.0	20.0	18.8	17.2	15.8	14.5	—	—
1	1.24	1090	CFM	3092	2959	2804	2651	2500	2330	2142	1902	1585
			Sones	26.0	25.0	24.0	23.0	22.0	20.0	18.9	17.3	15.4

Performance certified is for installation type A: Free inlet, Free outlet. Power rating (BHP) does not include transmission losses. Performance ratings include the effects of a filter in the airstream. The sound ratings shown are loudness values in fan sones at 5 ft. (1.5 m) in a hemispherical free field calculated per AMCA Standard 301. Values shown are for installation type A: Free inlet fan sone levels.