

**Utility Exhaust Belt-Drive Blower**

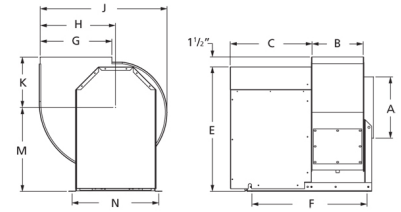


Designed for commercial kitchen exhaust or industrial spark resistant applications requiring high volumes of air at high static pressures. Suitable for ducted exhaust, supply or return-air applications. Constructed out of heavy gauge steel with polyester gray coating. The scroll is welded, has a bolted access door and 1 inch threaded drain connection for easy cleaning.

- Maximum inlet air temperature: 300° F
- UL/cUL 762 Listed for Restaurant Exhaust Appliances
- Polyester gray coating
- Backward incline nonoverloading aluminum wheel
- Aluminum rub ring
- Bolted access door

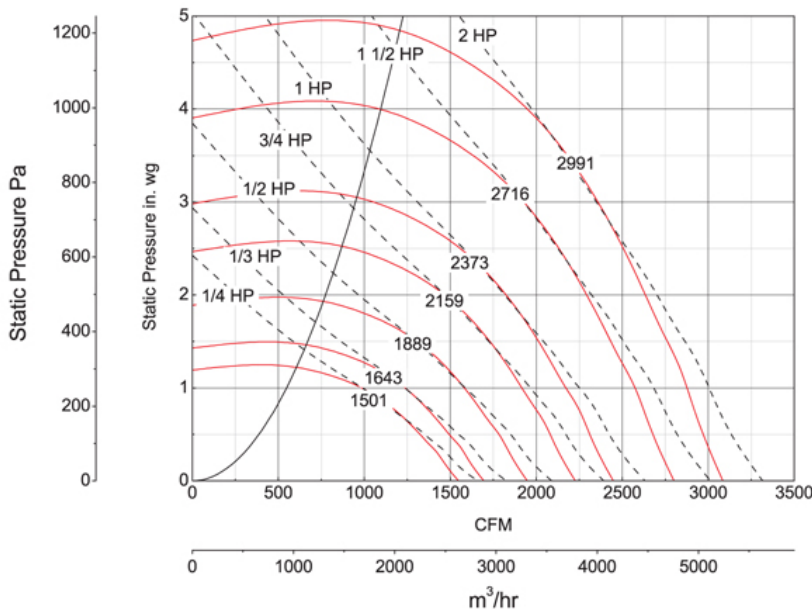


Dayton Electric Mfg. Co. certifies that the blowers shown herein are licensed to bear the AMCA seal. The ratings shown are based on tests and procedures performed in accordance with AMCA Publication 211 and comply with the requirements of the AMCA Certified Ratings Program.



<b>A</b>	<b>B</b>	<b>C</b>	<b>E</b>	<b>F</b>	<b>G</b>
13 in	9 5/8 in	15 1/2 in	22 1/4 in	21 3/8 in	13 in
<b>H</b>	<b>J</b>	<b>K</b>	<b>M</b>	<b>N</b>	
13 1/4 in	23 3/16 in	9 3/4 in	15 1/8 in	16 in	

**Performance Characteristics**



**Construction Features**

<b>Impeller Diameter (Typ.)</b>	12 1/4 in
<b>Impeller Type</b>	Backward Inclined Centrifugal
<b>Impeller Material</b>	Aluminum
<b>Max Inlet Temp</b>	300 °F
<b>Bearing Type</b>	Ball
<b>Drive Package Description</b>	Drives By Others
<b>Warranty Length</b>	1 Year

**Air & Sound Performance**

Motor HP	Max BHP	Fan RPM	CFM @	0.000" SP	0.125" SP	0.250" SP	0.375" SP	0.500" SP	0.625" SP	0.750" SP	0.875" SP	1.000" SP	1.250" SP	1.500" SP	1.750" SP	2.000" SP	2.250" SP	2.500" SP	2.750" SP	3.000" SP
1/4	0.25	1501	CFM	1548	1494	1444	1387	1324	1258	1176	1093	968	—	—	—	—	—	—	—	—
			Sones	11.8	11.4	11.0	10.6	10.3	10.0	9.7	9.4	9.0	—	—	—	—	—	—	—	—
1/3	0.33	1643	CFM	1694	1645	1597	1553	1495	1438	1376	1301	1226	1005	—	—	—	—	—	—	—
			Sones	13.2	12.8	12.5	12.2	11.8	11.4	11.2	10.9	10.7	10.0	—	—	—	—	—	—	—
1/2	0.50	1889	CFM	1948	1905	1862	1823	1783	1733	1683	1633	1578	1447	1296	1065	—	—	—	—	—
			Sones	15.9	15.6	15.3	15.0	14.8	14.5	14.2	14.0	13.8	13.3	12.8	12.3	—	—	—	—	—
3/4	0.75	2159	CFM	2227	2189	2151	2113	2081	2048	2004	1960	1917	1828	1715	1600	1448	1246	906	—	—
			Sones	19.1	18.9	18.7	18.4	18.2	18.0	17.8	17.6	17.4	17.0	16.5	16.1	15.5	15.0	14.7	—	—
1	1.00	2373	CFM	2447	2413	2379	2344	2311	2282	2253	2213	2172	2093	2013	1910	1806	1702	1530	1346	1024
			Sones	21.0	21.0	21.0	20.0	20.0	20.0	20.0	19.8	19.7	19.3	18.9	18.5	18.1	17.6	17.0	16.6	16.3
1 1/2	1.50	2716	CFM	2801	2771	2741	2711	2681	2651	2626	2600	2574	2503	2434	2364	2293	2202	2111	2020	1928
			Sones	25.0	25.0	25.0	25.0	24.0	24.0	24.0	24.0	24.0	24.0	23.0	23.0	23.0	22.0	22.0	22.0	21.0
2	1.98	2991	CFM	3085	3057	3030	3003	2976	2948	2921	2898	2875	2825	2761	2698	2635	2571	2500	2418	2335
			Sones	29.0	29.0	29.0	29.0	28.0	28.0	28.0	28.0	28.0	28.0	27.0	27.0	27.0	26.0	26.0	26.0	25.0

Performance certified is for installation type B: Free inlet, Ducted outlet. Power rating (BHP) does not include transmission losses. Performance ratings do not include the effects of appurtenances (accessories). The AMCA Certified ratings Seal applies to air performance ratings only.