

Utility Exhaust Belt-Drive Blower

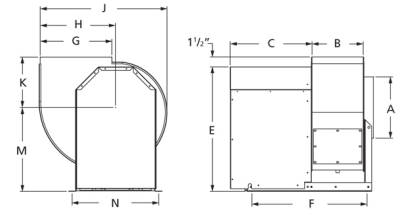


Designed for commercial kitchen exhaust or industrial spark resistant applications requiring high volumes of air at high static pressures. Suitable for ducted exhaust, supply or return-air applications. Constructed out of heavy gauge steel with polyester gray coating. The scroll is welded, has a bolted access door and 1 inch threaded drain connection for easy cleaning.

- Maximum inlet air temperature: 300° F
- UL/cUL 762 Listed for Restaurant Exhaust Appliances
- Polyester gray coating
- Backward incline nonoverloading aluminum wheel
- Aluminum rub ring
- Bolted access door

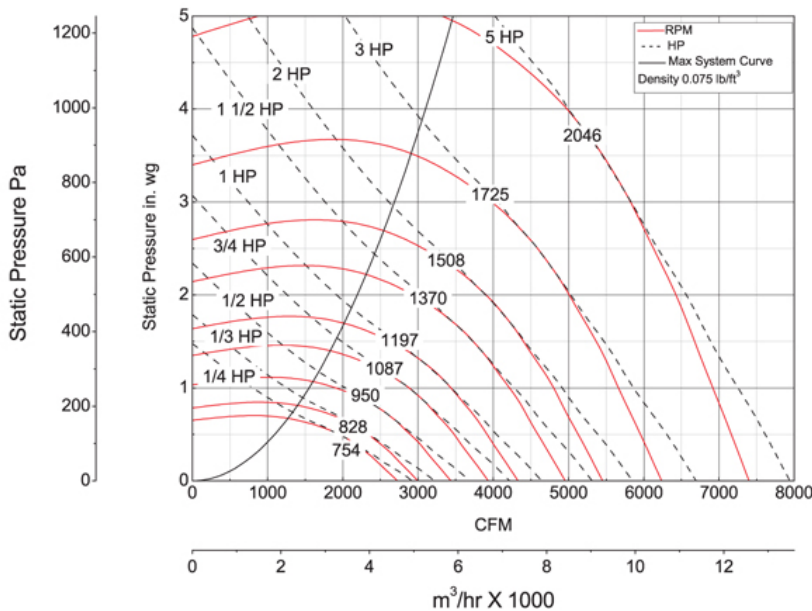


Dayton Electric Mfg. Co. certifies that the blowers shown herein are licensed to bear the AMCA seal. The ratings shown are based on tests and procedures performed in accordance with AMCA Publication 211 and comply with the requirements of the AMCA Certified Ratings Program.



A	B	C	E	F	G
19 1/4 in	14 1/8 in	22 in	33 1/4 in	32 1/4 in	19 3/8 in
H	J	K	M	N	
19 5/8 in	34 1/4 in	13 3/4 in	22 3/8 in	28 1/4 in	

Performance Characteristics



Construction Features

Impeller Diameter (Typ.)	18 1/4 in
Impeller Type	Backward Inclined Centrifugal
Impeller Material	Aluminum
Max Inlet Temp	300 °F
Bearing Type	Ball
Drive Package Description	Drives By Others
Warranty Length	1 Year

Air & Sound Performance

Motor HP	Max BHP	Fan RPM	CFM @	0.000" SP	0.125" SP	0.250" SP	0.375" SP	0.500" SP	0.625" SP	0.750" SP	0.875" SP	1.000" SP	1.250" SP	1.500" SP	1.750" SP	2.000" SP	2.250" SP	2.500" SP	2.750" SP	3.000" SP
1/4	0.25	754	CFM	2727	2564	2400	2201	1952	1504	—	—	—	—	—	—	—	—	—	—	—
			Sones	11.4	10.9	10.5	9.9	10.2	10.4	—	—	—	—	—	—	—	—	—	—	—
1/3	0.33	828	CFM	2995	2847	2696	2529	2341	2091	1668	—	—	—	—	—	—	—	—	—	—
			Sones	11.8	11.4	10.9	10.4	9.9	10.1	10.4	—	—	—	—	—	—	—	—	—	—
1/2	0.50	950	CFM	3436	3307	3176	3047	2894	2734	2540	2281	1864	—	—	—	—	—	—	—	—
			Sones	13.0	12.5	12.1	11.6	11.2	11.0	11.0	11.0	11.5	—	—	—	—	—	—	—	—
3/4	0.75	1087	CFM	3931	3819	3706	3590	3479	3344	3206	3056	2880	2335	—	—	—	—	—	—	—
			Sones	15.1	14.7	14.3	13.9	13.5	13.0	12.8	12.5	12.3	11.9	—	—	—	—	—	—	—
1	1.00	1197	CFM	4329	4227	4125	4021	3916	3814	3690	3566	3437	3114	2620	—	—	—	—	—	—
			Sones	16.9	16.5	16.1	15.7	15.3	15.0	14.5	14.2	14.0	13.5	13.1	—	—	—	—	—	—
1 1/2	1.50	1370	CFM	4955	4866	4777	4687	4595	4504	4415	4317	4208	3988	3733	3402	2904	—	—	—	—
			Sones	20.0	19.7	19.3	19.0	18.7	18.3	18.0	17.7	17.3	16.8	16.1	15.6	15.4	—	—	—	—
2	2.00	1508	CFM	5454	5373	5292	5211	5128	5045	4962	4881	4799	4602	4401	4177	3904	3549	3007	—	—
			Sones	23.0	23.0	22.0	22.0	22.0	21.0	21.0	21.0	21.0	20.0	19.7	19.1	18.6	18.3	18.0	18.3	—
3	3.00	1725	CFM	6239	6168	6097	6026	5956	5883	5811	5738	5666	5525	5357	5185	5008	4811	4588	4313	3976
			Sones	29.0	28.0	28.0	28.0	27.0	27.0	26.0	26.0	26.0	25.0	24.0	24.0	23.0	23.0	23.0	23.0	23.0
5	4.99	2046	CFM	7400	7340	7280	7221	7161	7101	7041	6980	6919	6797	6675	6558	6418	6273	6127	5978	5822
			Sones	37.0	37.0	37.0	36.0	36.0	35.0	35.0	35.0	35.0	34.0	33.0	33.0	32.0	32.0	31.0	31.0	30.0

Performance certified is for installation type B: Free inlet, Ducted outlet. Power rating (BHP) does not include transmission losses. Performance ratings do not include the effects of appurtenances (accessories). The AMCA Certified ratings Seal applies to air performance ratings only.